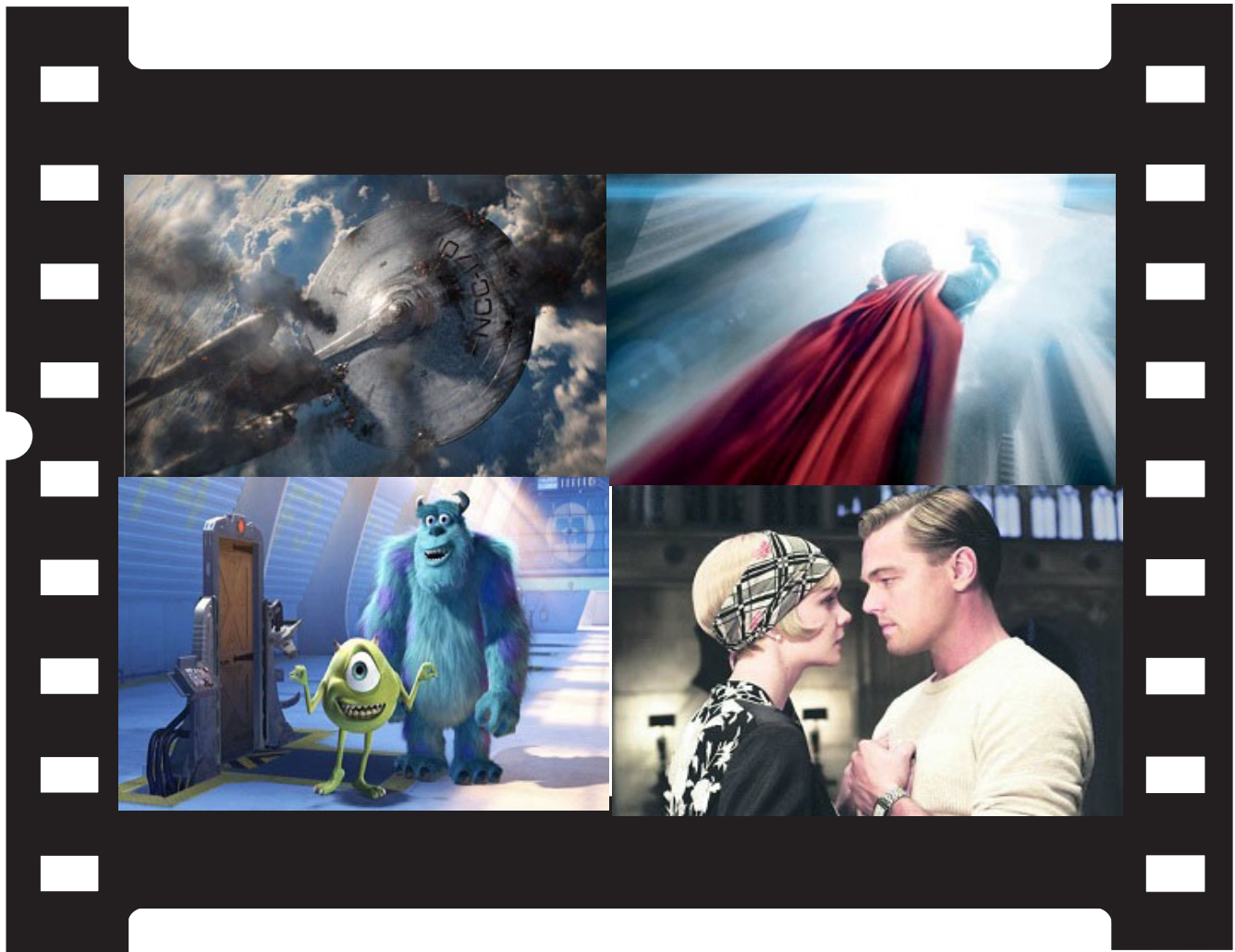


Visual Parables

Film & Faith in Dialogue



Upper L to R, Scenes from: StarTrek:Into Darkness;
The Great Gatsby; Monsters University

Also Inside:

The Heat; World War Z; Before Midnight; Epic;
Mud; After Earth; At Any Price; The Angels' Share; more.

Visual Parables

Contents

July/August 2013

Issue No. 216

Editor/Publisher
Dr. Edward McNulty

Web Editor/Consultant
Dr. J. Nichols Adams

Columnist
Rev. Doug Sweet

Reviewers
Revs. Eric and Emily Larsen

ISSN: 1064-6485

VISUAL PARABLES is published Bimonthly as a print piece, and reviews are posted weekly on its website. Subscribers are permitted to copy a review or a guide for a one-time use by members of their organization. All other rights reserved under the International Copyright Union, the Universal Copyright Convention and the Pan-American Copyright Convention.

Subscription orders (\$36) and address changes:

Visual Parables
PO Box 19229
Boulder, CO 80308-2229
1-800-475-7555
or
Visual Parables
63 Boone Lake
Walton, KY 41094

At Theaters

Star Trek: Into Darkness	3
Man of Steel	6
T. Great Gatsby	8
T. Angels' Share.....	11
Before Midnight	12
Mud	13
Epic	14
Monsters University	15
Frances Ha	17
Renoir	18
After Earth	19
Disconnect	21
At Any Price	23
Love Is All You Need	25
World War Z	27
T. Purge	29
T. Heat	30
Lore	31
No Place on Earth	32
Midnight's Children	33
Stories We Tell	34
White House Down	35
The Internship.....	37

On Video/DVD

Briars in t. Cottonpatch	39
--------------------------------	----

Articles

Films for Hiroshima Day	23
T. Many Faces of Jean Valjean	40

Lectionary Links

Media Meanderings back cover

To reach Editor Ed McNulty

1-859-493-0286

emcnulty@insightbb.com

Our Film Content Rating Guide

Our unscientific assessment of the content of a film in regards to Violence (V), Language (L), and Sex/Nudity is measured on a scale from 0 (None) to 10 (Highest). It is intended to give viewers some idea as to why a film is rated R, PG-13, PG, or G.