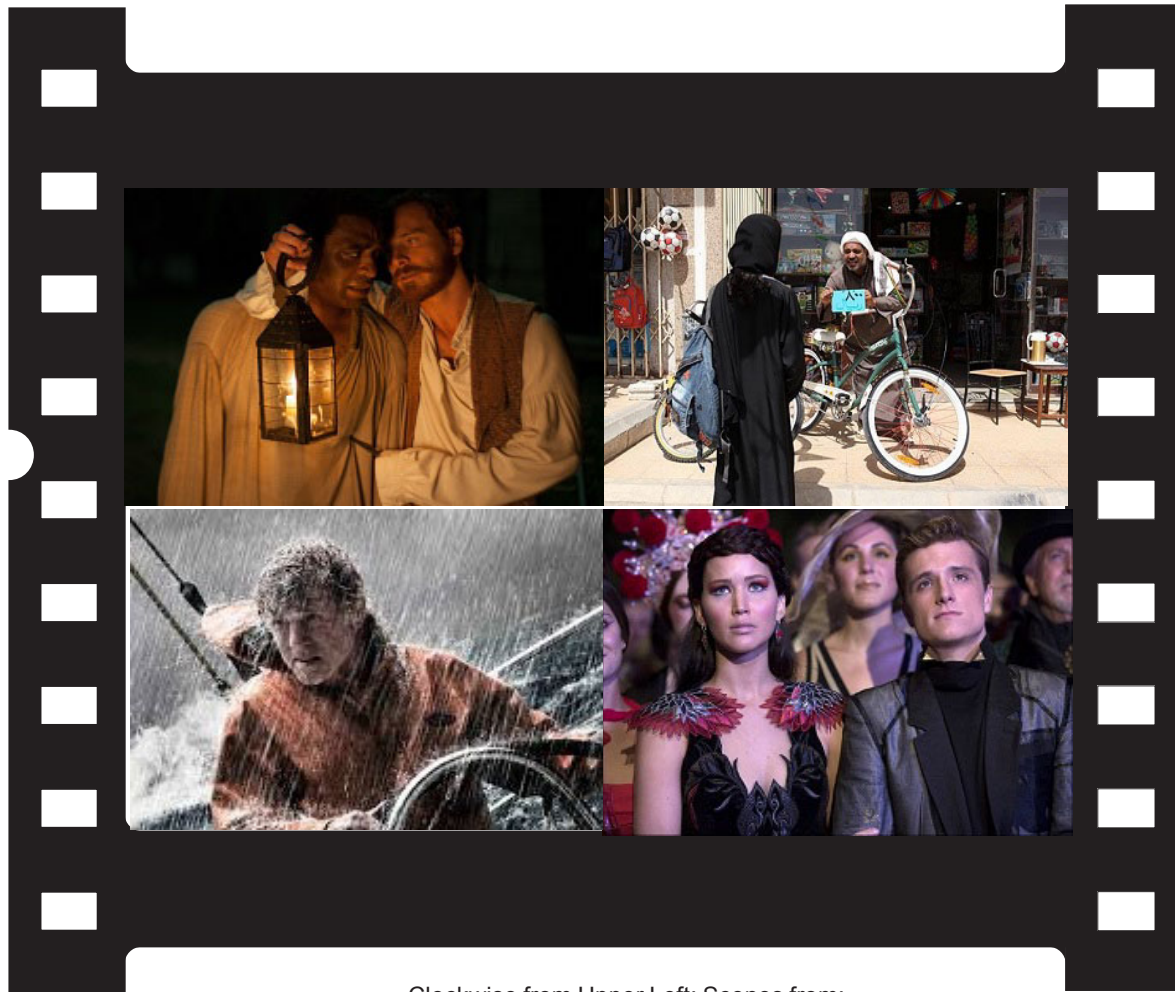


# Visual Parables

*Film & Faith in Dialogue*



Clockwise from Upper Left: Scenes from:  
12 Years a Slave; Wadjda; Hunger Games-Catching Fire; All is Lost.

## **Also Inside:**

**Dallas Buyers Club; Ender’s Game; About Time;  
Thor: The Dark World; Black Nativity; more.**

# Visual Parables

# Contents

December 2013

Issue No. 219

Editor/Publisher  
**Dr. Edward McNulty**

Web Consultants  
**David Crumm & Michael Thompson**

Columnist  
**Rev. Doug Sweet**

Additional Reviewer  
**Markus Watson**

ISSN: 1064-6485

**VISUAL PARABLES** is published Bimonthly as a print piece, and reviews are posted weekly on its website. Subscribers are permitted to copy a review or a guide for a one-time use by members of their organization. All other rights reserved under the International Copyright Union, the Universal Copyright Convention and the Pan-American Copyright Convention.

Visual Parables  
63 Boone Lake  
Walton, KY 41094

Unless noted all Scripture quotations are from the New Revised Standard Version Bible, copyright © 1989 the Division of Christian Education of the National Council of the Churches of Christ in the United States of America. Used by permission. All rights reserved.

## At Theaters

12 Years a Slave .....	3
Wadjda .....	8
All Is Lost .....	11
Dallas Buyers' Club.. ..	14
Haute Cuisine .....	16
I Used to Be Darker .....	18
Ender's Game .....	19
Hunger Games: Catching Fire .....	20
About Time .....	25
Kill Your Darlings .....	26
Thor: the Dark World .....	27
Black Nativity .....	28
Inside Llewyn Davis .....	30

## Article;

Then Worthy Christmas Films on DVD .....	32
--	----

## Sweet Resources .....

34

## From Vision Video

Mr. Scrooge to See You .....	36
.Merry Christmas? .....	36

Lectionary Links .....	38
------------------------	----

Media Meanderings .....	16
-------------------------	----

To reach Editor Ed McNulty  
1-859-493-0286  
[edsvisualparables@twc.com](mailto:edsvisualparables@twc.com)

## Our Film Content Rating Guide

Our unscientific assessment of the content of a film in regards to Violence (V), Language (L), and Sex/Nudity is measured on a scale from 0 (None) to 10 (Highest). It is intended to give viewers some idea as to why a film is rated R, PG-13, PG, or G.