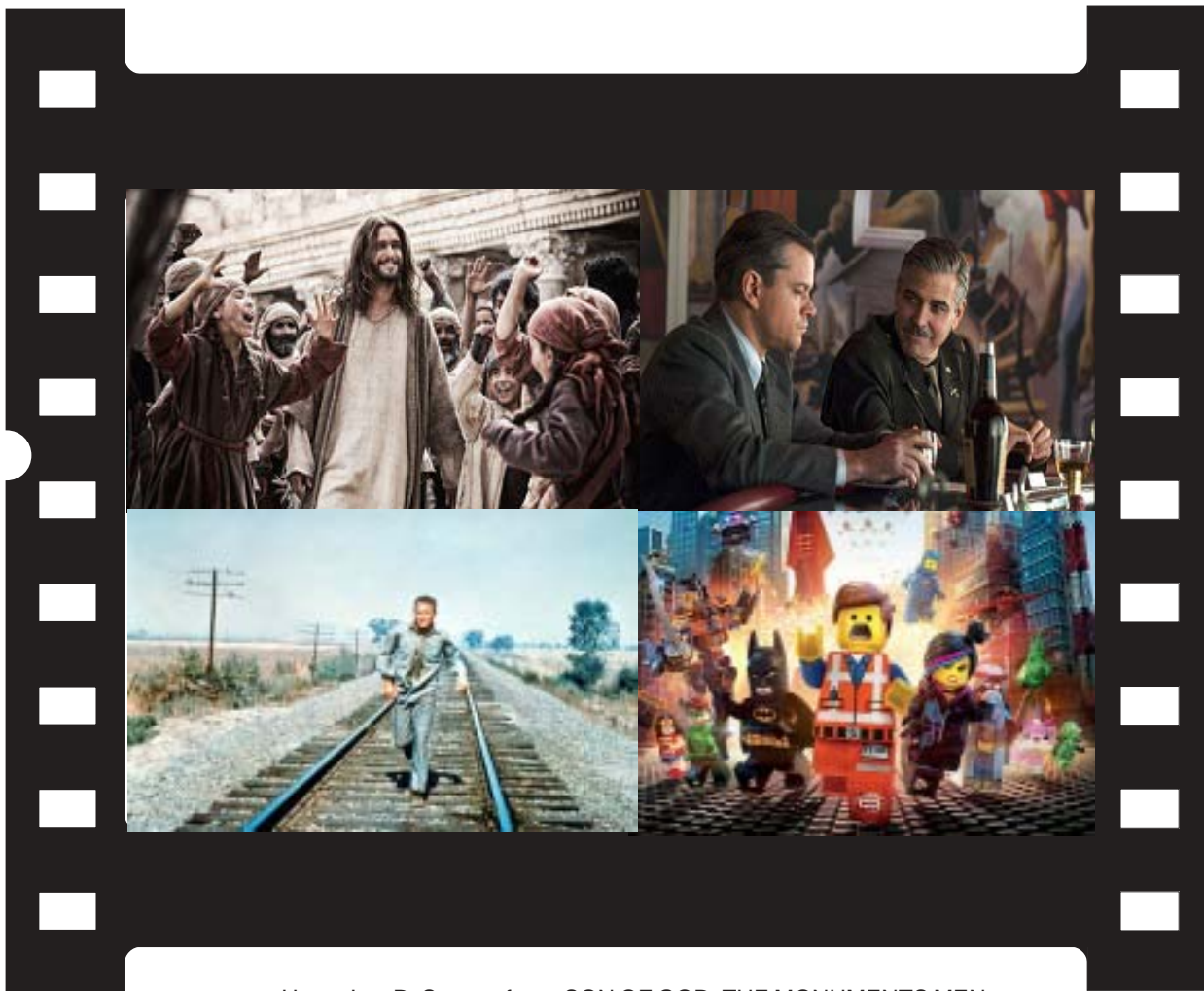


Visual Parables

Film & Faith in Dialogue



Upper L to R, Scenes from: SON OF GOD; THE MONUMENTS MEN;
THE LEGO MOVIE; and COOL HAND LUKE.

Inside:

**The Above + Gimme Shelter; Non-Stop; Stalingrad;
The Invisible Woman; Robocop; That Awkward Moment; Winter's Tale**

Visual Parables

Contents

2014 Issue No. 222

Editor
Dr. Edward McNulty

Publisher
David Crumm, ReadtheSpirit

Web Consultant
Michael Thompson

Columnist
Rev. Doug Sweet

ISSN: 1064-6485

VISUAL PARABLES is published monthly as an on-line journal, and reviews are posted weekly on its website. Subscribers are permitted to copy a review or a guide for a one-time use by members of their organization, provided Visual Parables is credited. All other rights reserved under the International Copyright Union, the Universal Copyright Convention and the Pan-American Copyright Convention.

To reach Editor Edward McNulty
1-859-493-0286
esvisualparables@twc.com

At Theaters

Son of God	3
T. Monuments Men	7
Gimme Shelter	9
Non-Stop	11
T. Lego Movie..	12
T. Invisible Woman	14
Robocop	16
That Awkward Moment	18
Winter's Tale	19
Stalingrad	20

Sweet Resources

22

Article:

Films About Jesus Christ	24
--------------------------------	----

On DVD

Cool Hand Luke	27
Grace Unplugged.	35

On YouTube

He Who Must Die	36
-----------------------	----

Lectionary Links

38

Media Meanderings

40

Unless noted all Scripture quotations are from the New Revised Standard Version Bible, copyright ©1989 the Division of Christian Education of the National Council of the Churches of Christ in the United States of America. Used by permission. All rights reserved.

Our Film Content Rating Guide

Our unscientific assessment of the content of a film in regards to Violence (V), Language (L), and Sex/Nudity is measured on a scale from 0 (None) to 10 (Highest). It is intended to give viewers some idea as to why a film is rated R, PG-13, PG, or G.