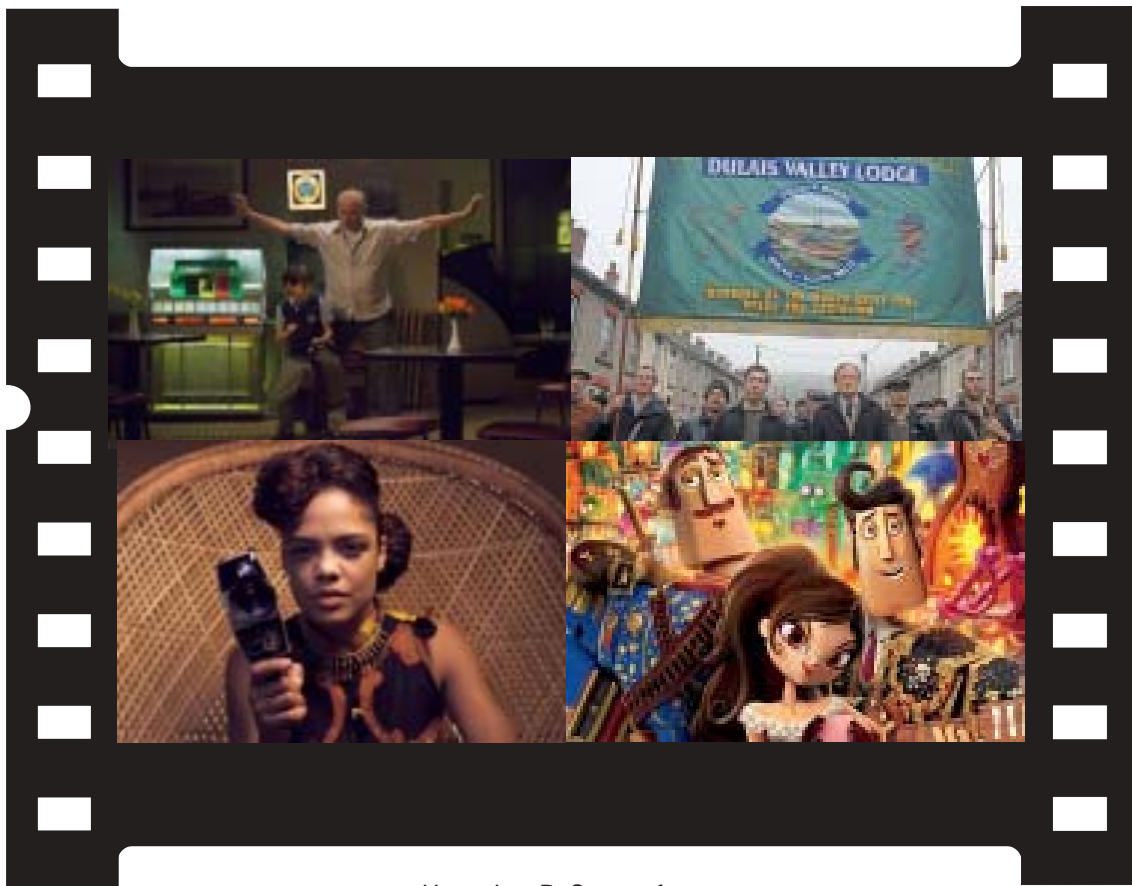


Visual Parables

Film & Faith in Dialogue



Upper L to R, Scenes from:
St. Vincent; Pride; The Book of Life; Dear White People

Also Inside:

**Men, Women & Children; The Judge;
Kill the Messenger; The Skeleton Twins;
Fury; Rudderless; Dolphin Tale 2; Gone Girl**

Visual Parables

Contents

November 2014

Issue No. 230

Editor/Reviewer
Dr. Edward McNulty

Publisher
David Crumm, ReadtheSpirit

Web Consultant
Michael Thompson

Columnist
Rev. Doug Sweet

Reviewer
Cindy Corley

ISSN: 1064-6485

VISUAL PARABLES is published monthly as an on-line journal, and reviews are posted weekly on its website. Subscribers are permitted to copy a review or a guide for a one-time use by members of their organization, provided Visual Parables is credited..All other rights reserved under the International Copyright Union, the Universal Copyright Convention and the Pan-American Copyright Convention.

To reach Editor Edward McNulty
1-859-493-0286
edvisualparables@twc.com

At Theaters

St. Vincent	3
Men, Women & Children	6
Pride	10
T. Judge..	13
Dear White People	15
Kill t. Messenger	17
T. Book of Life	20
T. Skeleton Twins	22
Fury	24
Rudderless	26
Dolphin Tale 2	28
Gone Girl	29
Into t. Storm	30

On Video/DVD

GFA Missions Collection	32
Desperate	34

Sweet Resources	31
Lectionary Links	34
Media Meanderings	35

To see fresh reviews go each Monday morning to <http://www.readthespirit.com/visual-parables/>.

I usually post new reviews over the weekend, beginning with one or two on Friday night and others Sunday night.

Unless noted all Scripture quotations are from the New Revised Standard Version Bible, copyright ©1989 the Division of Christian Education of the National Council of the Churches of Christ in the United States of America. Used by permission. All rights reserved.

Our Film Content Rating Guide

Our unscientific assessment of the content of a film in regards to Violence (V), Language (L), and Sex/Nudity is measured on a scale from 0 (None) to 10 (Highest). It is intended to give viewers some idea as to why a film is rated R, PG-13, PG, or G.