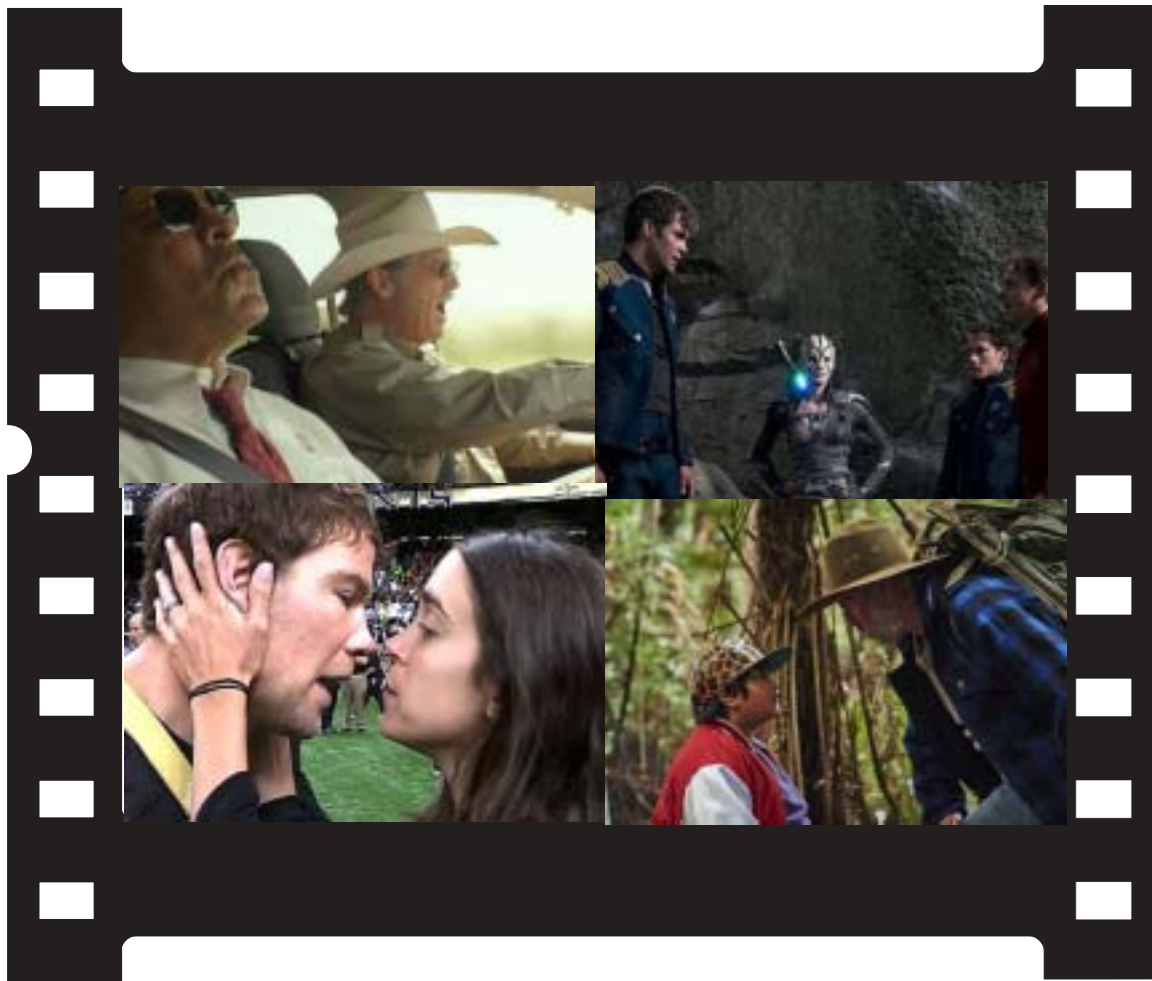


Visual Parables

Film & Faith in Dialogue



Upper L to R, Scenes from: *Hell or High Water*; *Star Trek Beyond*; *Hunt for the Wilderpeople*; & *Gleason*

Also Inside:

**The Secret Life of Pets, The Infiltrator;
Cafe' Society; Swiss Army Man; & More**

Visual Parables

Contents

August 2016

Issue No. 251

Editor, Reviewer
Dr. Edward McNulty

Publisher
David Crumm, ReadtheSpirit

Web Consultant
Becky Hile

Columnist
Rev. Doug Sweet

ISSN: 1064-6485

VISUAL PARABLES is published monthly as an on-line journal, and reviews are posted weekly on its website. Subscribers are permitted to copy a review or a guide for a one-time use by members of their organization, provided Visual Parables is credited. All other rights reserved under the International Copyright Union, the Universal Copyright Convention and the Pan-American Copyright Convention.

To reach Editor Edward McNulty
1-8937-310-1476
edsvisualparables@twc.com

At Theaters

Hell or High Water	3
Star Trek Beyond	6
The Secret Life of Pets	8
Now You See Me 2	9
Wiener-Dog	10
The Purge: Election Year.. ..	12
The Infiltrator	14
Dheepan	16
Swiss Army Man	18
Central Intelligence	19
Cafe Society	20
Hunt for the Wilderpeople	22
Gleason (Documentary)	24

On Video/DVD

Hiroshima	26
-----------------	----

Sweet Resources	29
------------------------------	----

Lectionary Links	30
-------------------------------	----

Unless noted all Scripture quotations are from the New Revised Standard Version Bible, copyright ©1989 the Division of Christian Education of the National Council of the Churches of Christ in the United States of America. Used by permission. All rights reserved.

New reviews are posted at www.visualparables.org. several times each week, so keep checking. Better yet, join the Visual Parables Group on Face Book, and you will be notified when new posts are up.

Our Film Content Rating Guide

Our unscientific assessment of the content of a film in regards to Violence (V), Language (L), and Sex/Nudity is measured on a scale from 0 (None) to 10 (Highest). It is intended to give viewers some idea as to why a film is rated R, PG-13, PG, or G.