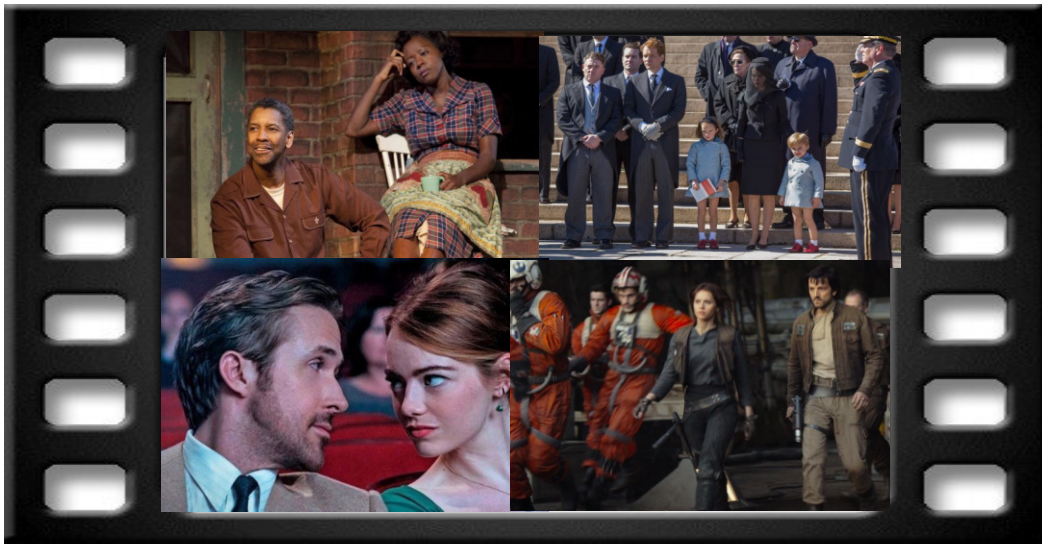


Visual Parables

Film & Faith in Dialogue



Clockwise from U. L.: FENCES; JACKIE; ROGUE ONE; La La LAND

Also Inside:

**Manchester by the Sea; Passengers;
Nocturnal Animals; Collateral Beauty;
La La Land; The Eagle Huntress; Lion;
& more**

Visual Parables

Contents

January 2017

Issue No. 256

Editor, Reviewer

Dr. Edward McNulty

Publisher

David Crumm, ReadtheSpirit

Web Consultant

Becky Hile

Michael Thompson

Columnist

Rev. Doug Sweet

ISSN: 1064-6485

VISUAL PARABLES is published monthly as an on-line journal, and reviews are posted weekly on its website. Subscribers are permitted to copy a review or a guide for a one-time use by members of their organization, provided Visual Parables is credited. All other rights reserved under the International Copyright Union, the Universal Copyright Convention and the Pan-American Copyright Convention.

To reach Editor Edward McNulty

1-937-310-1476

edsvisualparables@twc.com

At Theaters

Fences	3
Jackie	6
La La Land	9
Rogue One: A Star Wars Story	12
Passengers	15
Manchester by the Sea ..	17
Nocturnal Animals	19
Collateral Beauty	21
Lion	23
Allied ..	25
Rules Don't Apply	27

On Video/DVD

Parkland	29
----------------	----

Sweet Resources	31
------------------------------	----

Lectionary Links	31
-------------------------------	----

Media Meanderings	
--------------------------------	--

New reviews are posted at www.visualparables.org several times each week, so keep checking. Better yet, join the Visual Parables Group on Face Book, and you will be notified when new posts are up.

Unless noted all Scripture quotations are from the New Revised Standard Version Bible, copyright ©1989 the Division of Christian Education of the National Council of the Churches of Christ in the United States of America. Used by permission. All rights reserved.

Our Film Content Rating Guide

Our unscientific assessment of the content of a film in regards to Violence (V), Language (L), and Sex/Nudity is measured on a scale from 0 (None) to 10 (Highest). It is intended to give viewers some idea as to why a film is rated R, PG-13, PG, or G.