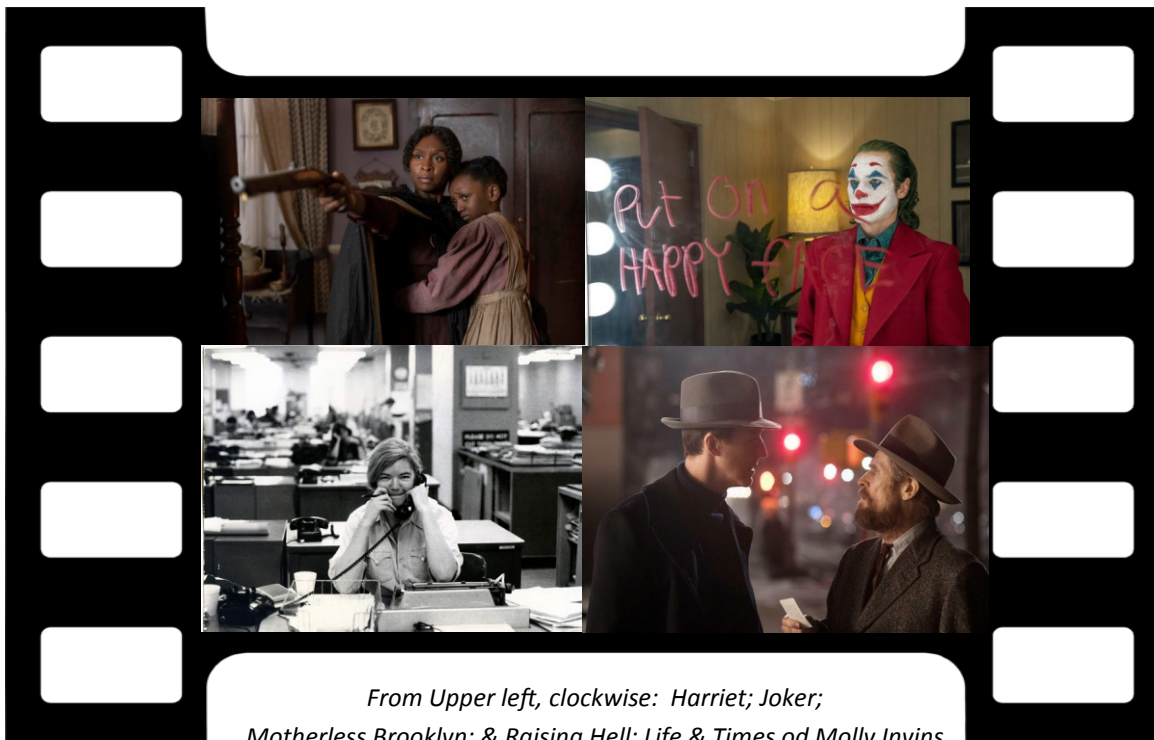


# Visual Parables

*Film & Faith in Dialogue*



*From Upper left, clockwise: Harriet; Joker; Motherless Brooklyn; & Raising Hell: Life & Times of Molly Invis*

## **Also Inside:**

**Black & Blue; The Great Alaskan Race; Mono;  
Maleficent: Mistress of Evil; The Current Wars  
& more**

# Visual Parables

# Contents

November 2019

Issue No. 290

Editor, Reviewer

**Dr. Edward McNulty**

Publisher

**David Crumm, ReadtheSpirit**

Web Consultants

**Becky Hile**

**Michael Thompson**

Columnist

**Rev. Doug Sweet**

ISSN: 1064-6485

**VISUAL PARABLES** is published monthly as an on-line journal, and reviews are posted weekly on its website. Subscribers are permitted to copy a review or a guide for a one-time use by members of their organization, provided Visual Parables is credited. All other rights reserved under the International Copyright Union, the Universal Copyright Convention and the Pan-American Copyright Convention.

To reach Editor Edward McNulty

1-937-310-1476

[edsvisualparables@twc.com](mailto:edsvisualparables@twc.com)

## At Theaters

Harriet .....	3
Joker .....	9
Black and Blue.....	12
The Great Alaskan Race .....	14
Mono .....	15
Maleficent: Mistress of Evil.....	17
The Current War .....	19
Motherless Brooklyn.....	21
Lucy in the Sky.....	24
Raise Hell: the Life & Times of Molly Ivins.....	25

**Sweet Resources** ..... 28

**Lectionary Links** ..... 29

*New reviews are posted at [www.visualparables.org](http://www.visualparables.org). several times each week, so keep checking. Better yet, join the Visual Parables Group on Face Book, and you will be notified when new posts are up.*

Unless noted all Scripture quotations are from the New Revised Standard Version Bible, copyright ©1989 the Division of Christian Education of the National Council of the Churches of Christ in the United States of America. Used by permission. All rights reserved.

## Our Film Content Rating Guide

Our unscientific assessment of the content of a film in regards to Violence (V), Language (L), and Sex/Nudity is measured on a scale from 0 (None) to 10 (Highest). It is intended to give viewers some idea as to why a film is rated R, PG-13, PG, or G.