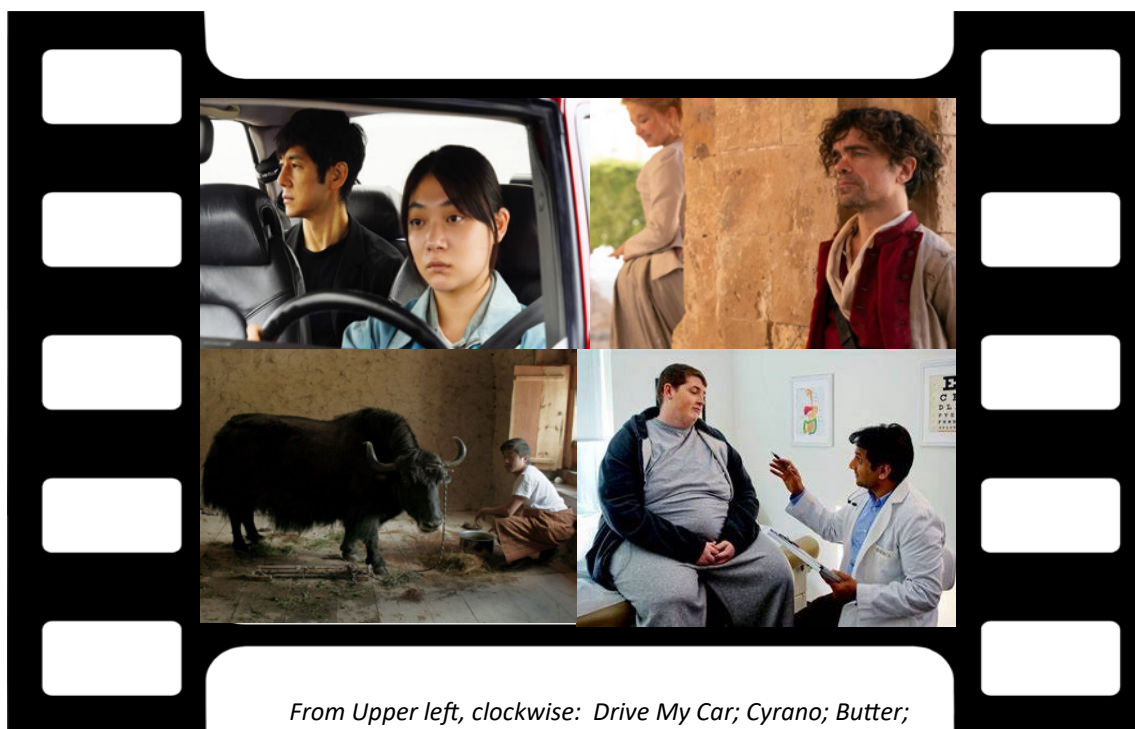


Visual Parables

Film & Faith in Dialogue



From Upper left, clockwise: Drive My Car; Cyrano; Butter; Lunana: the Yak in the Classroom.

Also Inside:

**Dune; The Worst Person in the World ;
Death on the Nile; Nightmare Alley;
Ten Films for Women's History Month
& more**

Visual Parables

Contents

March 2022

Issue No. 318

Editor, Reviewer
Dr. Edward McNulty
Publisher
David Crumm, ReadtheSpirit
Web Consultants
Becky Hile
Michael Thompson
Columnist
Rev. Doug Sweet
ISSN: 1064-6485

VISUAL PARABLES is published monthly as an on-line journal, and reviews are posted weekly on its website. Subscribers are permitted to copy a review or a guide for a one-time use by members of their organization, provided Visual Parables is credited. All other rights reserved under the International Copyright Union, the Universal Copyright Convention and the Pan-American Copyright Convention.

To reach Editor Edward McNulty
1-937-310-1476
edsvisualparables@twc.com

At Theaters

Drive My Car.....	3
Cyrano	6
Butter	8
Lunana: A YAK in the Classroom	10
Dune.....	13
Nightmare Alley.....	15
Rifkin’s Festival	17
Death on the Nile	19
The Station Agent	20
The Worst Person in the World	22
Sundown.....	23
Moon Fall	24

Documentary

Lincoln’s Dilemma.. ..	25
Breaking Bread.....	27

Articles

10 Films for Women’s History Month	29
Media Meanderings	30

Sweet Resources	31
------------------------------	----

Lectionary Links	33
-------------------------------	----

New reviews are posted at www.visualparables.org. several times each week, so keep checking. Better yet, join the Visual Parables Group on Face Book, and you will be notified when new posts are up.

Unless noted all Scripture quotations are from the New Revised Standard Version Bible, copyright ©1989 the Division of Christian Education of the National Council of the Churches of Christ in the United States of America. Used by permission. All rights reserved.

Our Film Content Rating Guide

Our unscientific assessment of the content of a film in regards to Violence (V), Language (L), and Sex/Nudity is measured on a scale from 0 (None) to 10 (Highest). It is intended to give viewers some idea as to why a film is rated R, PG-13, PG, or G.